



Lowther Hills Ski Club

Members' Pack 2015/16

Contents

- 1 Welcome!
- 2 Club Culture
- 3 Members' benefits
- 4 How the Ski Club communicates with You
- 5 The Facilities
 - 5.1... Leadhills Nursery Area
 - 5.2... Lowther Hill
- 6..... The plan for this season 2015/16
 - 6.1... New: Night skiing in Leadhills
- 7 Other things that are keeping us busy
 - 7.1... Snowfencing
 - 7.2... Snowgrooming
 - 7.3... Clubhouse on Lowther Hill
- 8 Be prepared for winter conditions
- 9 Lowther Hills Ski Club Code of Conduct
- 10 The 10 FIS Rules for the Conduct of Skiers and Snowboarders

1. Welcome to Lowther Hills Ski Club

Thank you for joining Lowther Hills Ski Club. Your membership application has been processed and now you are formally a member of Lowther Hills Ski Club Community Interest Company. We hope you will enjoy being part of this small family-friendly, volunteer-based club which operates the only snowsports facilities in the south of Scotland.

Please take the time to read this Members' Pack. It contains important information about your Club, the facilities, the benefits and the responsibilities of being a member.

Once again, let us emphasise that skiing in the Lowther Hills would not be possible without the extraordinary amount of work and time given by our volunteers.

As a volunteer-run club, we operate the facilities when volunteers are available (and the weather allows!). We tend to open the ski tows mainly during weekends and school holidays, but if volunteers are available we also open during midweek. Our aim is to provide skiing up to 20 days per season.

While our hill is small and our facilities are humble, our camaraderie is great and the privilege of being part of the history of skiing in the south of Scotland is unique.

The Lowther Hills Ski Club is now your club. Please consider getting actively involved through volunteering. There are all sorts of jobs available and many different ways to help the club. The more people lending a hand, the more we will get done.

Your Club's directors:

Anjo Abelaira, Chairman | skiclub@lowtherhills.com

Kelly Gardiner-Penny, Secretary | secretary@skiclub.lowtherhills.com

Des Reid, Treasurer | treasurer@skiclub.lowtherhills.com

Ross Dolder | dolders@btinternet.com

Cath Hault | cath@skiclub.lowtherhills.com

Tim Mullens | tim@skiclub.lowtherhills.com

Chris Penny | chriszenny@hotmail.com

Elysha Ramage | leadhillskitchen@gmail.com

2. Club Culture

Lowther Hills has a unique set up when compared with other Scottish ski areas. A volunteer-run social enterprise, Lowther Hills Ski Club Community Interest Company is the organisation that oversees the legalities and management of the ski area, from running the ski tows in winter when volunteers are available, to filling forms, building, and maintenance work in the off-season.

First and foremost, we are a friendly bunch of locals and people from further afield, mainly within the south of Scotland, all sharing a common passion for the mountains and, specifically, our Lowther Hills.



Skiing conditions are often marginal at low altitudes in Scotland. It is solely due to our volunteers' hard work that skiing facilities can exist in an area like the Lowthers Hills. The vast bulk of the on-the-slope and off-hill work is undertaken by our volunteers in their free time. Some of our members even take leave from their day job to help at the Ski Club. Running a skiing facility, even a small one like Lowther, is a massive, year-round commitment. It is also a rewarding experience.

[Work parties](#) are a part of our club culture and are an ideal way to not only contribute to the club, but are also a great way to meet like-minded people. Good friendships have been forged on the hill. For many, the club functions as more of a community or an extended family rather than just a group of skiers. Our members are offered the opportunity to ski, work, and socialise together, united in their enjoyment of this unique trait of Scottish alpine culture.

While we don't expect every single one of our members to fraternise or contribute to a work party on the hill, we ask all members to be mindful of the enormous amount of work and time that a few put on this project so that it can be enjoyed by the many. Please support your club wherever you can: looking for funding, donating, helping at events, sharing on facebook... Please get in touch with any of the club's directors if there is anything where you may be able to help your club.

We look forward to sharing with you the club's culture of helping out, enjoying, and communally sharing the rewards of our voluntary work.

3. Members' benefits

Lowther Hills Ski Club members enjoy a wide range of benefits which include:

+ Using the Club facilities (ski tows and clubhouse) free of charge every day we open.

Through our affiliation with [Snowsport Scotland](#), the national governing body for snowsports in Scotland, you also receive:

+ Discounts on day tickets at other Scottish ski resorts upon production of a Lowther Hills Ski Pass.

Please see <http://www.snowsportscotland.org/member-benefits/show/8> for details.

+ Discounts from selected suppliers of equipment, clothing, and travel. For full details on the discounts offered please visit: <http://www.snowsportscotland.org/member-benefits>

4. How the Ski Club communicates with You

The Ski Club keeps you updated on club events, work parties, snow reports, and general news by sending you newsletters to the email address you provided in your membership form when you joined the Club.

It is important that you let us know if you change your email address, or if your email address does not receive the Ski Club's newsletters.

We usually send members an update every 2-3 weeks outwith the skiing season. In winter we keep in touch with you every time that we run the ski tows.

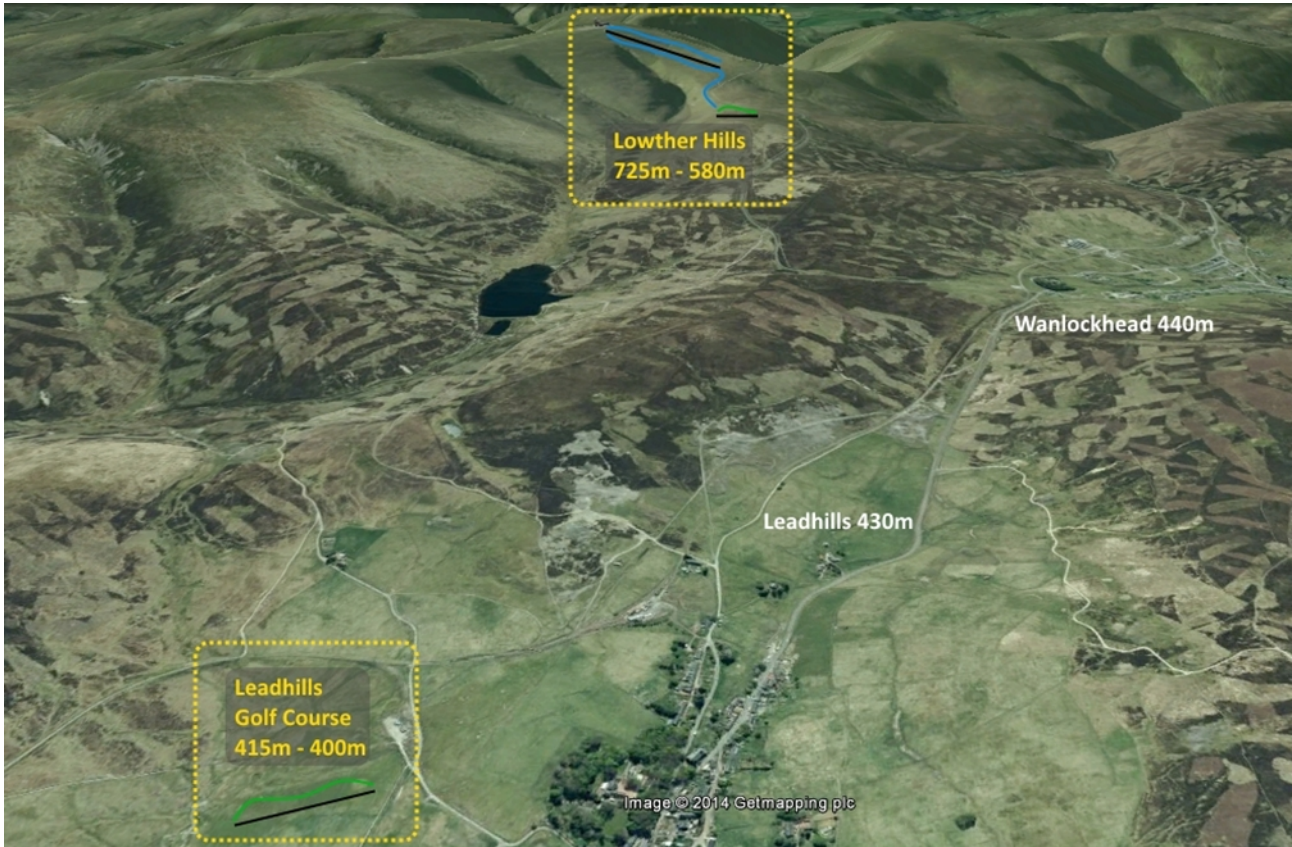
The Ski Club is volunteer-run and will operate the tows whenever volunteers are available and weather conditions are suitable. Our snow report will be sent to you regularly by email to the email address you provided when you joined the Ski Club. Updates are also published on the club's website, www.skiclub.lowtherhills.com.

We always try to provide as much notice as possible whether the ski tows will be in operation. However, please note that because of the vagaries of the Lowther weather, we often have to take the decision to run a tow at very short notice after assessing the snow and weather conditions in the early morning.

If you would like to speak with any of the Club's volunteer directors, please find their email addresses on page 2 of this Member's Pack. For any membership queries, please contact directly Kelly at secretary@skiclub.lowtherhills.com

5. The Facilities

The Lowther Hills Ski Club currently operates two skiing areas: a 140 metre-long nursery slope for beginners and children in the village of **Leadhills**, and a 475 metre-long slope for intermediate and advanced skiers on **Lowther Hill**.



Always wear your Ski Pass
and sign-in upon arrival at the slope

Upon arrival at the slope please sign-in in the Clubhouse.

Please have your Ski Pass in your possession and display it at all times when using the facilities.

If you have any questions feel free to approach one of our volunteers who will be identifiable by their high-visibility vests. If you require any assistance to familiarise yourself with how to use the tow please ask one of our volunteers who will be happy to assist you.

5.1 Leadhills Nursery Area

Conveniently situated near the village's public parking spaces and about 500m (6 minute walk) up the road from the Hopetoun Arms Hotel (www.hopetounarms.co.uk), the nursery slope is the recommended area for beginners and families.

Located in the Golf Course grounds, the gentle 140 metre-long piste and easy rope tow makes this slope an excellent place to practice your first turns. Ski Club members have the use of the Leadhills Golf Club clubhouse, where you can put on your ski boots and get shelter from the cold.

Please respect the Golf Club's grounds. Do not sledge on the Golf Course, avoid walking on the Greens, and do not ski outside the designated nursery slope. Please note the nearest toilet facilities are located at the Hopetoun Arms Hotel.



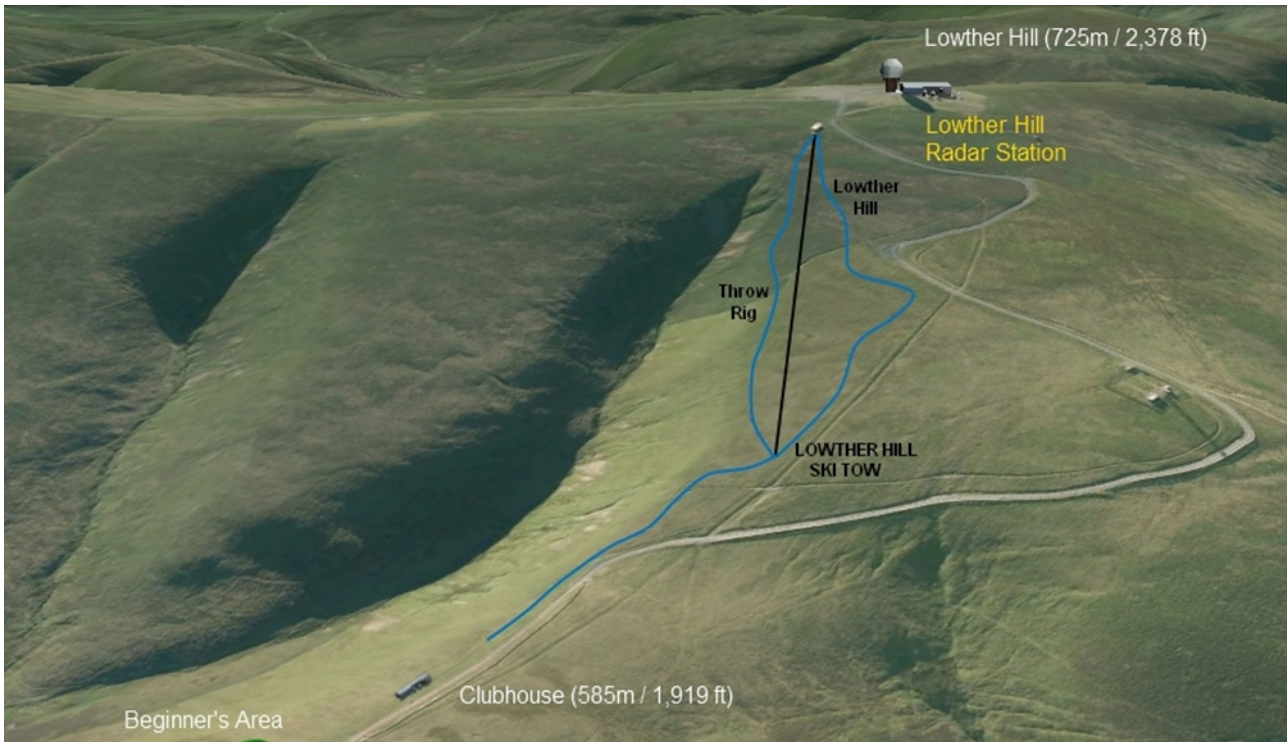
PARKING INSTRUCTIONS - Please park your car at Leadhills square or at the public parking spaces at Leadhills Primary School. Ski Club members are welcome to use the Hopetoun Arms' car park, which is located behind the hotel. If you use their car park, please consider giving your business to the pub after your day on the slopes.

Please be considerate and do not try to drive up to the Golf Club in winter conditions. The track is steep and not cleared in winter. Too many cars get stuck in this road trying to make it all the way to the Golf Course, blocking the road and wasting volunteers' time.

5.2 Lowther Hill

The facilities on Lowther Hill include a 475 metre-long rope tow for intermediate and advanced skiers, and a temporary portacabin for shelter from the weather.

The Lowther Hill ski tow is for intermediate and advanced skiers only. You must be confident that you can ride all the way without falling off. In the interest of safety, please do not use the Lowther Hill ski tow if you are a beginner with no experience of using a fast drag lift.



The Club's facilities on Lowther Hill are located 1.5 miles (40 minutes walk) from Wanlockhead, on the Lowther Hill Radar Station road. This is a private road and no public vehicular access is permitted. You will have to walk or skin all the way up.

Please note the nearest public toilets to Lowther Hill are located in front of the Lead Mining Museum in Wanlockhead.

At certain times, and subject to the condition of the Radar Road, the owner of the Wanlockhead Inn (www.wanlockheadinn.co.uk) may be available to transfer Ski Club members from the Inn to Lowther Hill, in his Land Rover, at £2 per trip, per person. We will try to notify members of his availability whenever possible, but please remember there is no guarantee the Land Rover transfer will be available most times and you still need to be prepared to walk or skin to Lowther Hill if you want to use the facilities there.

If you have the opportunity to use the Land Rover transfer, please park your car at the Wanlockhead Inn and consider giving your business to the pub after your day on the slopes.

PARKING INSTRUCTIONS - In Wanlockhead, members should park in the designated parking areas (and only in these areas), as shown on the site map.



IMPORTANT: You are an ambassador of the Ski Club. Please **DO NOT** leave your car near the cottages in the village or by the main road as this often upsets local residents. **DO NOT** park your car near the Radar Road or the National Air Traffic Service (NATS) garage, or on the disused Railway line track which links NATS garage with the Mountain Lodge (see the yellow dotted line on the map above). The roads must be kept clear at all times. In order to minimise traffic impact, please try to car share wherever possible.

Please be aware that parking areas in Wanlockhead are not cleared. We strongly recommend you to have winter tyres fitted to your car. Don't forget to bring a snow shovel with you to clear a space or, in the event of heavy snow, dig your car back out!

MOUNTAIN LODGE PARKING: If you are walking to Lowther Hill, the area below the Mountain Lodge is the closest parking area to the Radar Road. From the Mountain Lodge, you can walk to the Radar Road by the disused railway line track.

Parking at the Mountain Lodge is recommended only for days when there is a black road and for 4WD's only when it is snowy. We strongly recommend you to have winter tyres fitted to your car.

WANLOCKHEAD INN PARKING: Ski Club members have permission to park at the Wanlockhead Inn and at the area below the Mountain Lodge.

When parking at the Wanlockhead Inn can members please park around the side of the building, as shown below. **Please do not park in front of the Inn** unless the parking area around the side of the building is full.



6. The plan for this season 2015/16

This winter 2015/16 we are aiming to provide 20 days of mechanical uplift between December-March, just like last year, always subject to favourable snow conditions and availability of volunteers.

At the Nursery area in Leadhills we will have a similar set up as last season, running one or two of our portable tows at the Nursery area depending on demand. Last year we opened the Nursery area 12 days, mainly between mid-January - mid-February. You can expect a similar pattern of operations at the Nursery area for this season.

Snowboarding instructor Alasdair Walker will do his best to make himself available to provide regular instruction and coaching at our facilities this winter. He is kindly offering special deals for Lowther Hills Ski Club members. Please visit his website www.thenorthernmovement.com for details. In addition to snowboarding instruction, we are still working to be able to provide instruction to novice skiers as well.

Lowther Hill will be operated subject to suitable weather conditions, and when the Nursery area in Leadhills is not open. Please remember that the weather in Lowther Hill can be extreme, that the ski tow and slope is not suitable for beginners, and that you will have to be prepared to walk to the facilities from Wanlockhead. We are most likely to operate Lowther Hill towards the end of the season, mainly in February-March, when the snow is gone from the village and windy conditions tend to be less severe on the hill.

Would you like to see more things happening at the Club? We all do. Please consider getting involved. The more people giving a hand, the more we will be able to achieve together.

6.1 New: Night Skiing in Leadhills

This season 2015/16 we are expecting to provide night skiing at the Nursery slope in Leadhills. Again, this will be organised whenever volunteers are available. While we always strive to provide as much notice as we can, please remember that more often than not we see ourselves having to take advantage of the right conditions at short notice.

We are providing Night Skiing thanks to the can-do attitude and ingenuity of our volunteers, who engineered a clever system of portable LED site lights that your club's finances could just about afford. Until someone gives us a five-figure grant for a proper installation of floodlights, please be prepared to ski and enjoy a basic system of floodlights.

The access track between the Hopetoun Arms and Leadhills Golf Course does not have street lights, so please remember to bring a torch with you and walk with care to the slope as the track is likely to be icy and very slippery.

7. Other things that are keeping us busy

We have received lots of praise for all what we have achieved in such a short time (a year ago there were no facilities on Lowther Hill as only in December 2014 we started erecting the first pylons for the Lowther tow). We are all looking forward to enjoy the best facilities the Ski Club can afford and we are working very hard to get them. Please consider helping your club. As well as running the club and operating the tows, these are the main jobs that we are currently working on:

7.1 Snowfencing

Over the past months we have been investigating options for installing 1.6km of post and rail snow fencing, which could potentially lengthen the season on Lowther Hill up to at least 25-30 days. This is a massive undertaking that may take 2-4 years to complete, but we are hopeful that this 2015/16 season we may be able to already erect at least 60 metres of timber snowfencing on Lowther Hill. Please get in touch if you would be able to help with the construction or funding for this project.

7.2 Snowgrooming

Please be aware that as of yet the Ski Club does not have a snow groomer, therefore the slopes are not pisted. Bear this in mind particularly when planning to ski on Lowther Hill as the terrain up there is more challenging and remote.

We have organised a crowdfunder, <https://www.gofundme.com/LHSCpistebasher> , and with your help we hope to raise the £9,900 that we need to have a piste basher on Lowther Hill by December 2016. Please get in touch if you can help fundraising for the groomer.

7.3 Clubhouse on Lowther Hill

In Autumn 2014 we successfully received Planning Permission for a clubhouse and garage on Lowther Hill which, once constructed, will allow us to provide more and better skiing to both beginners, intermediate, and advanced skiers.

We have made great progress in 2015 trying to secure the funding for what will be an investment in the region of £50,000. If our funding applications are successful, construction of the Clubhouse would start in Summer 2016 and the new building would be ready for the 2016/17 season. In the meantime, we have placed a temporary portacabin on the site to provide shelter to those of our members who will be enjoying the snow of Lowther Hill in this season 2015/16.

The Lowther Hill Clubhouse will be a great leap forward for the Club. Once we have a suitable building on Lowther, we will be able to start focusing on providing access for members of all abilities to enjoy the high slopes where the most reliable snow conditions can be found.

The Lowther Clubhouse is the most important project for the future of the Club and your help is needed. We are very keen to hear from anybody who may be able to help with funding applications, as well as members with experience in renewable energy and the building industry. Please get in touch.

8. Be prepared for winter conditions

The stretch of the B797 between Wanlockhead-Leadhills is poorly maintained by Dumfries & Galloway Council during wintry conditions. We strongly recommend you to have winter tyres fitted to your car. Please do not take the risk of getting stuck or blocking the road.

Please be prepared and check the weather and traffic conditions before travelling to Wanlockhead/Leadhills. If you are driving to Wanlockhead from the south, we strongly recommend you to access Wanlockhead via Elvanfoot (Exit at the M-74 Junction 14, then follow the B7040 to Leadhills and then continue to Wanlockhead). The roads to Leadhills are regularly ploughed and gritted by South Lanarkshire Council.

Please be aware that parking areas in Leadhills and Wanlockhead are not cleared. Please bring a snow shovel with you to clear a space or, in the event of heavy snow, dig your car back out!

BE PROPERLY EQUIPPED FOR

SCOTTISH MOUNTAIN WEATHER

Check the weather forecast before setting off. Scotland's mountain weather can be extreme and can change very quickly. Bring bottled drink, snacks, and -most importantly- dress for cold temperatures and be prepared for sudden weather changes.

If you are bringing children to the Ski Club's facilities you must make sure they are properly dressed for the cold weather.

Skiing is a High Risk Sport

The Lowther Hills Ski Club is a non-for-profit club which is run by and on behalf of the members. The Volunteers, Officers, and Directors give their time voluntarily. In terms of injury, skiing is one of the highest risk sports that adults and children undertake on a regular basis. Whilst every effort is made to maintain as high a standard of equipment as possible, every person who uses the Club's equipment does so entirely at the persons' own risk, and has no claim against the Club members, for any injury or damage howsoever occasioned and whether or not in any way whatsoever due to any negligent act and/or omission.

In an Emergency

Several Ski Club volunteers are trained First Aiders. The Ski Club has a First Aid kit at the Golf Club Clubhouse in Leadhills, and two kits at the Engine Hut and temporary portacabin on Lowther Hill.

In an emergency, call 999 and ask for the Fire & Rescue Service. There is Fire & Rescue Station in Leadhills. Please be aware that mobile phone reception in Leadhills, Wanlockhead, and Lowther Hills can be patchy and unreliable.

Please respect the Ski Club's rules

9. Lowther Hills Ski Club Code of Conduct

It is extremely important that all members read and abide by the Ski Club's code of conduct. **Failure to do so could result in the loss of the Club's lease.**

PARKING – PLEASE PARK ONLY in the designated car parks as shown on the site map. **It is vitally important that local residents are not impacted upon by members' cars** - not everyone is as enthusiastic about the Club as we are! Be aware that the parking areas are not always cleared by the snow plough so it is a good idea to bring a shovel to clear an area of the car park, if required.

SKI PASSES are non-transferable and should be kept in your possession at all times when using the facilities. **Please note there will be a £5 replacement fee for lost ski passes.**

DOGS ARE NOT allowed on the hill, as per the Club's lease with Hopetoun Estate.

LITTER – No litter to be left on the hill. Please ensure that you pick up after yourself. Parents are responsible for ensuring that children do not leave litter behind.

SMOKING – No cigarette butts to be thrown on the hill. If you are a smoker please ensure that you dispose of butts the same as any other litter and take it away with you.

CLUBHOUSE - Please ensure that no belongings are left behind in the Clubhouse. The Club will accept no responsibility for items left behind, either in the Clubhouse or on the hill. Please do not leave litter in the Clubhouse, bag it and take it home.

SKI TOWS – Before using the rope tows please make sure that all straps, scarves, long hair, anything that could get caught in the tow and cause an accident are secure. If the tow operator gives instructions regarding the tow please listen carefully and follow directions.

CHILDREN – Parents are responsible for their children's safety at all times.

WEATHER – Please dress appropriately for mountain weather conditions. Be aware that conditions can change rapidly and be prepared for this possibility.

GENERAL WELLBEING – Be aware that the facilities on Lowther Hill are remote. Bring enough food and water for the time that will be spent on the hill. If you feel unwell please contact one of the first aiders on site or a volunteer who will alert one for you.

ENVIRONMENT - Please respect the local environment. Stick to the access routes shown on the maps.

Lowther Hills Ski Club strongly recommends the wearing of helmets.

... And Lowther Hills Ski Club hopes that all of our members have a fantastic time on the slopes!

10. The 10 FIS Rules for the Conduct of Skiers and Snowboarders

Please familiarise yourself with the 10 FIS (International Ski Federation) Rules of Conduct. These are the international standard of conduct for responsible skiers and have the purpose to avoid accidents on the slopes.



Rule 1: Respect for others

A skier or snowboarder must behave in such a way that he does not endanger or prejudice others.



Rule 2: Control of speed and skiing or snowboarding

A skier or snowboarder must move in control. He must adapt his speed and manner of skiing or snowboarding to his personal ability and to the prevailing conditions of terrain, snow and weather as well as to the density of traffic.



Rule 3: Choice of route

A skier or snowboarder coming from behind must choose his route in such a way that he does not endanger skiers or snowboarders ahead.



Rule 4: Overtaking

A skier or snowboarder may overtake another skier or snowboarder above or below and to the right or to the left provided that he leaves enough space for the overtaken skier or snowboarder to make any voluntary or involuntary movement.



Rule 5: Entering, starting and moving upwards

A skier or snowboarder entering a marked run, starting again after stopping or moving upwards on the slopes must look up and down the slopes that he can do so without endangering himself or others.



Rule 6: Stopping on the piste

Unless absolutely necessary, a skier or snowboarder must avoid stopping on the piste in narrow places or where visibility is restricted. After a fall in such a place, a skier or snowboarder must move clear of the piste as soon as possible.



Rule 7: Climbing and descending on foot

A skier or snowboarder either climbing or descending on foot must keep to the side of the piste.



Rule 8: Respect for signs and markings

A skier or snowboarder must respect all signs and markings.



Rule 9: Assistance

At accidents, every skier or snowboarder is duty bound to assist.



Rule 10: Identification

Every skier or snowboarder and witness, whether a responsible party or not, must exchange names and addresses following an accident.